

YOUR TECHNOLOGY PARTNER

HAMMER

SOLUTIONS

(479) 431-6890 | HAMMERSOLUTIONSINC.COM

ESET Antivirus Software User Guide

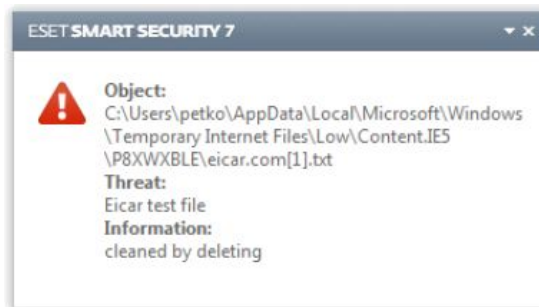


Standard Behavior

As a general example of how infiltrations are handled by ESET Smart Security, infiltrations are detected using:

- Real-time file system protection
- Web access protection
- Email client protection
- On-demand computer scan

Each uses the standard cleaning level and will attempt to clean the file and move it to Quarantine or terminate the connection. A notification window is displayed in the notification area at the bottom right corner of your computer screen (like the example below).



Removable Media Scanning

ESET Smart Security provides automatic removable media (CD/DVD/USB/...) scanning. This module allows you to scan an inserted media. This may be useful if the computer administrator wishes to prevent the users from using removable media with unsolicited content.

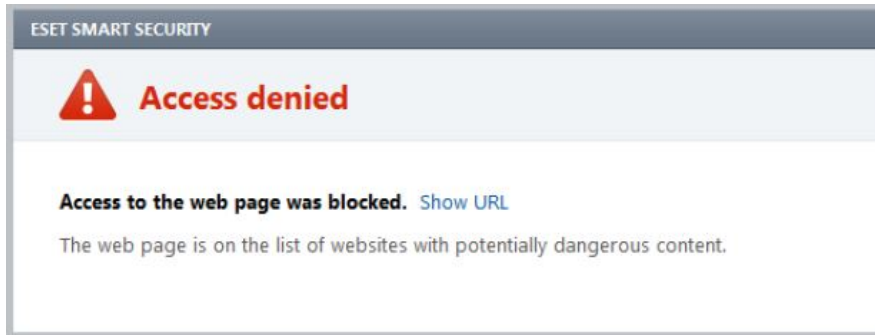
- Scan now – An on-demand computer scan of the inserted removable media device will be performed.
- Scan later – No action will be performed and the new device detected window will be closed.
- Setup... - Opens the Removable media setup section.



Web Access Protection

Internet connectivity is a standard feature in a personal computer. Unfortunately, it has also become the main medium for transferring malicious code

Access to known web pages with malicious content is always blocked.



Anti-Phishing Protection

The term phishing defines a criminal activity that uses social engineering (the manipulation of users in order to obtain confidential information). Phishing is often used to gain access to sensitive data such as bank account numbers, PIN numbers and more.

When you access a phishing website, you will receive the following dialog in your web browser. By clicking **Proceed to the site (not recommended)**, you will be able to access the website without a warning message.



On-Demand Scanner

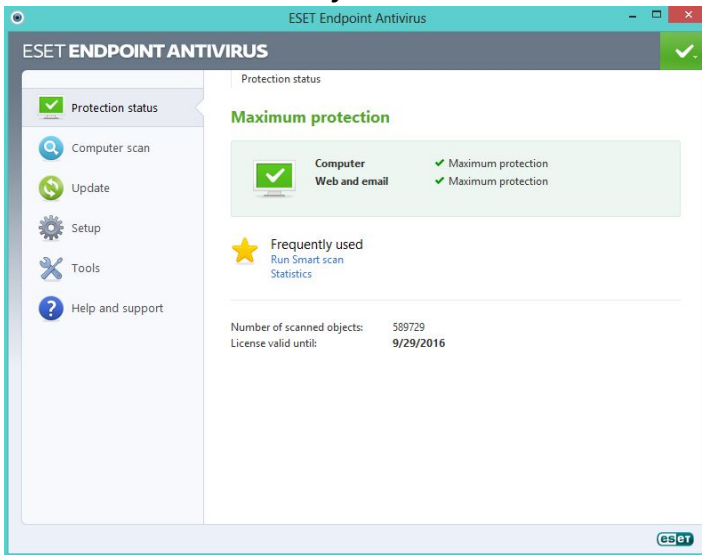
The on-demand scanner is an important part of your antivirus solution. It is used to perform scans of files and folders on your computer. From a security standpoint, it is essential that computer scans are not just run when an infection is suspected, but regularly as part of routine security measures. We recommend that you perform regular in-depth scans of your system to detect viruses that are not captured by Real-time file system protection when they are written to the disk.

Smart Scan

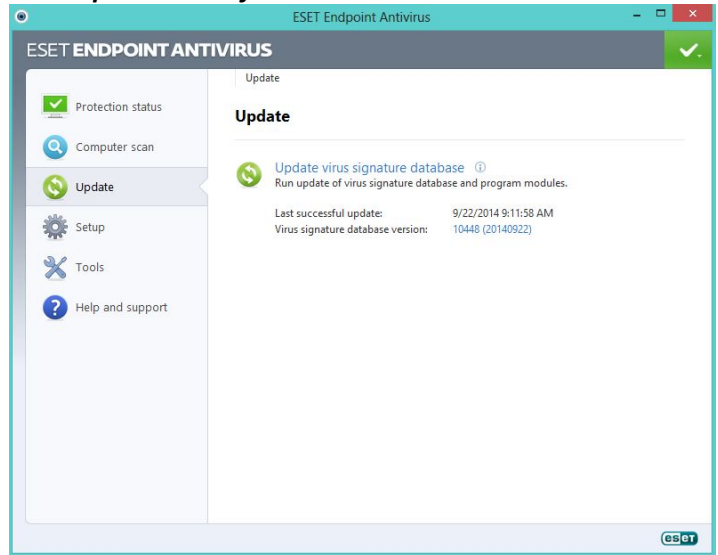
Smart scan allows you to quickly launch a computer scans and clean infected files with no need for user intervention. The advantage of Smart scan is it is easy to operate and does not require detailed scanning configuration. Smart scan checks all files on local drives and automatically cleans or deletes detected infiltrations.

How to Run a Smart Scan

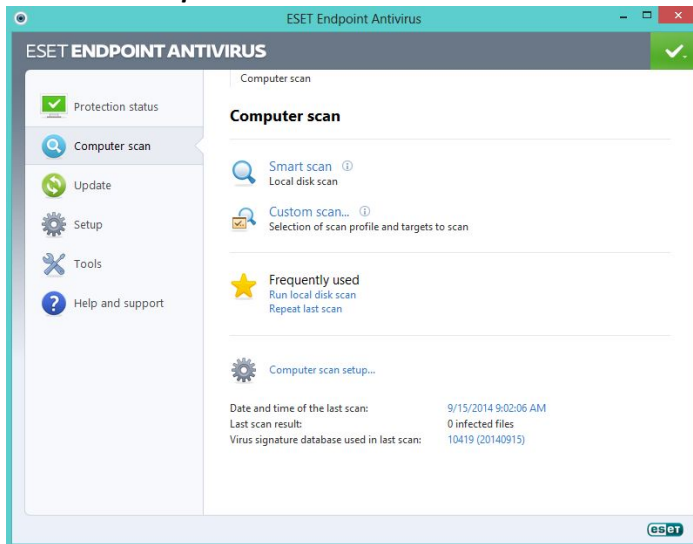
1. Launch ESET Antivirus Software



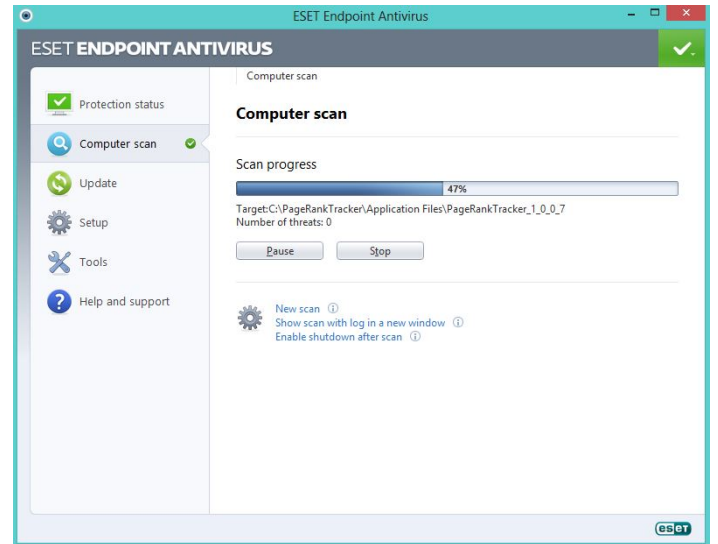
2. Update ESET if Available



3. Click on Computer scan



4. Run Smart scan



***If threats are detected ESET will group the items and allow you to “QUARANTINE ALL”.
This will safely and effectively remove the threats.
Depending on the threat level, a re-start of your computer may be required.***